



REX MAUGHAN
C.C. # 95-008638

REX MAUGHAN
SPECIAL ACTIVITIES DISTRICT

PEGGY JANE WILSON JENSON
Vol. 4593, Pg. 544

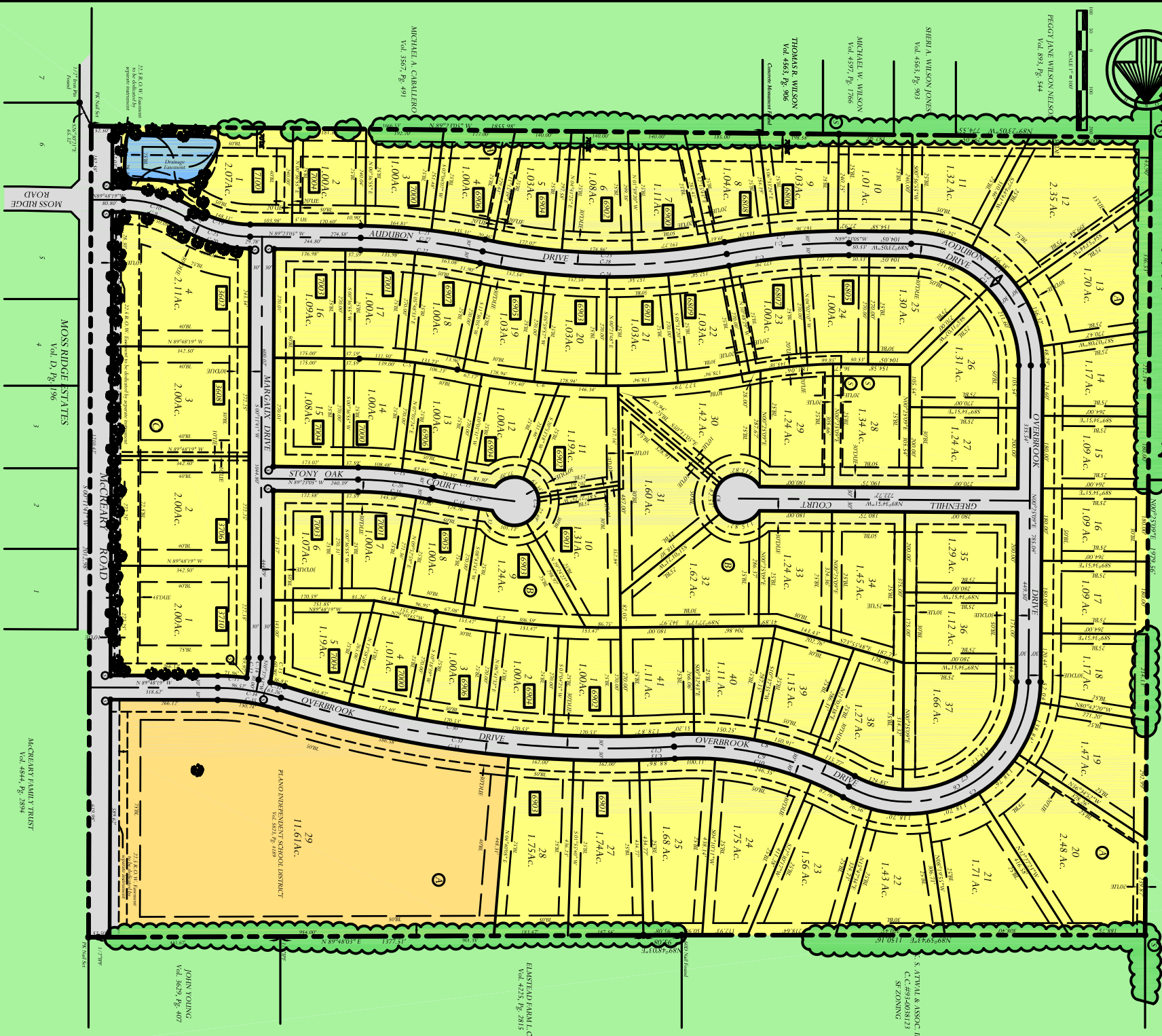
SIBER A WILSON JONES
Vol. 4564, Pg. 903

MICHAEL W. WILSON
Vol. 4597, Pg. 1766

THOMAS R. WILSON
Vol. 4564, Pg. 906

MICHAEL A. CHABLEIRO
Vol. 3567, Pg. 491

SCALE 1" = 400'



7
6
5
4
3
2
1

MOSS RIDGE
Vol. D, Pg. 196

MOSS RIDGE ESTATES
Vol. D, Pg. 196

MACCREARY ROAD
Vol. 4844, Pg. 2894

PRELIMINARY PLAT

BROOKS' FARM ESTATES

RICHARD SPARKS SURVEY, ABSTRACT NO. 850
COLLIN COUNTY, TEXAS

OWNER
WARNER LAND ADVISORS, L.P.

PREPARED BY
TIPPTON ENGINEERING, INC.

4925 Greenleaf Avenue - Suite 020 - Dallas, Texas 75206
214-366-0238
www.tipptoneng.com

S. OTTUM & ASSOC. INC.
C.C. # 14-00123
S. ZONING

ELMSTEAD FARM, C
Vol. 4235, Pg. 2815

JOHN YOUNG
Vol. 3625, Pg. 407